

30  
double-sided  
adhesive tape

40  
adhesive tape kapton

20  
PCM

10  
LP952245

60  
wire black (-)  
AWG28 UL1571

50  
wire red (+)  
AWG28 UL1571

40  
adhesive tape  
kapton (2x)

9,5<sup>+0,3</sup>  
-0,3

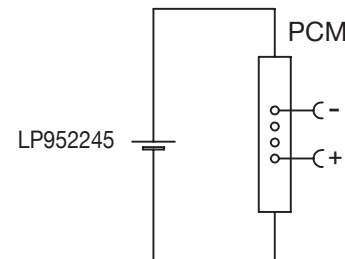
22<sup>+0,5</sup>  
-0,5

46<sup>+1,0</sup>  
-1,0

50<sup>+3,0</sup>  
-3,0

LiPo Battery 3.7V  
LP952245 900mAh

### Circuit Diagram



## Specification

Lithium Polymer Battery Pack LP952245 900mAh 3.7V with Protection Circuit Module (PCM)  
This data sheet describes the requirements and properties of lithium polymer rechargeable battery pack manufactured by LiPol Battery Co., Ltd - China

### Mechanical Characteristics

Cell	▶ LP952245
PCM	▶ Yes
NTC	▶ No
Configuration	▶ 1S1P
Weight	▶ appr. 18g

### Electrical Specification

Rated Capacity	▶ 900mAh min, 910mAh typ.
Nominal Voltage	▶ 3.7V
Wat-Hour Rating	▶ 3.33Wh
Max. Operating Voltage Range	▶ 2.75V to 4.20V
Max. Charge Voltage	▶ 4.2V ±50mV
Max. Charge Current	▶ 450mA
Max. Continuous Discharge Current	▶ 900mA
Discharge Cut Off	▶ 2.75V
Internal Impedance	▶ <200mΩ
Expected Cycle Life @ (0.5C/0.5C) @ 23±5°C	▶ 500 cycles ≥ 80%

### Cell Protection

Overcharge Detection	▶ 4.275 ±50mV (0.7 to 1.3sec. delay, release 4.275V ±50mV)
Overdischarge Detection	▶ 2.75V ±50mV (14 to 26msec. delay, resume 2.50V ±50mV)
Overcurrent Detection	▶ 2A to 4.5A (8 to 16msec. delay)

### Ambient Conditions

Charge Temp. Range	▶ 0 to +45°C
Discharge Temp. Range	▶ -20 to +60°C
Storage Temp. Range	▶ 1 year at -20 to +30°C >70%
	▶ 3 months at -20 to +45°C >70%
	▶ 1 month at -20 to +60°C >70%
Humidity	▶ 65 ±20%RH

### Environmental and Safety

Please follow LiPol Handling and Safety Precautions for Lithium Polymer Battery. This battery meets the requirements of Battery Directives, and the battery parts are IEC 62133 & RoHS-Compliant. For more safety precautions and performance standards, please go to [www.lipolbattery.com/support.html](http://www.lipolbattery.com/support.html)

Mae in mm All dimensions in mm	Freimatoleranzen Generaltoleranzen	Date 01.05.2018	Name Xie Qingfang	<b>LiPol Battery</b>	Index
Als Betriebsgeheimnis anvertraut, alle Rechte vorbehalten	up to 6 · 0,1 over 6 up to 30 · 0,2	Erst. / Orig 01.05.2018	Gepr./check 01.05.2018		
Proprietary data, company confidential, all rights reserved.	over 30 up to 100 · 0,3 over 100 · 0,5	Benennung/ Designation LP952245		Zchgng. / Dwg. Nr. 3 FD_3486_72	
		Origin:	support@lipolbattery.com	www.LiPolBattery.com	