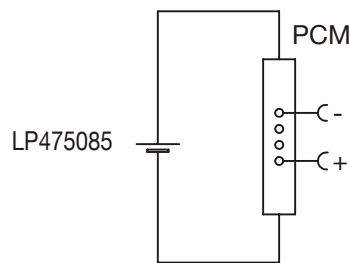


### Circuit diagram



## Specification

Lithium Polymer Battery Pack LP475085 2500mAh 3.7V with Protection Circuit Module (PCM)  
 This data sheet describes the requirements and properties of lithium polymer rechargeable battery pack manufactured by LiPol Battery Co., Ltd - China

### Mechanical Characteristics

- Cell ▶ LP475085
- PCM ▶ Yes
- NTC ▶ No
- Configuration ▶ 1S1P
- Weight ▶ appr. 50g
- Connector ▶ JST SYR-02T

### Electrical Specification

- Rated Capacity ▶ 2500mAh min, 2530mAh typ.
- Nominal Voltage ▶ 3.7V
- Wat-Hour Rating ▶ 9.25Wh
- Max. Operating Voltage Range ▶ 2.75V to 4.20V
- Max. Charge Voltage ▶ 4.2V ±50mV
- Max. Charge Current ▶ 1250mA
- Max. Continuous Discharge Current ▶ 2500mA
- Discharge Cut Off ▶ 2.75V
- Internal Impedance ▶ <200mΩ
- Expected Cycle Life @ (0.5C/0.5C) @ 23±5°C ▶ 500 cycles ≥ 80%

### Cell Protection

- Overcharge Detection ▶ 4.275 ±50mV (0.7 to 1.3sec. delay, release 4.275V ±50mV)
- Overdischarge Detection ▶ 2.75V ±50mV (14 to 26msec. delay, resume 2.50V ± 50mV)
- Overcurrent Detection ▶ 4A to 4.5A (8 to 16msec. delay)

### Ambient Conditions

- Charge Temp. Range ▶ 0 to +45°C
- Discharge Temp. Range ▶ -20 to +60°C
- Storage Temp. Range ▶ 1 year at -20 to +30°C >70%
- ▶ 3 months at -20 to +45°C >70%
- ▶ 1 month at -20 to +60°C >70%
- Humidity ▶ 65 ±20%RH

### Environmental and Safety

Please follow LiPol Handling and Safety Precautions for Lithium Polymer Battery. This battery meets the requirements of Battery Directives, and the battery parts are IEC 62133 & RoHS-Compliant. For more safety precautions and performance standards, please go to [www.lipolbattery.com/support.html](http://www.lipolbattery.com/support.html)

Mae in mm All dimensions in mm	Freimatoleranzen Generaltolerances	Date	Name	<b>LiPol Battery</b>	<b>3</b>	Zchng. / Dwg. Nr. <b>FD_3255_70</b>	Index		
		Erst. / Orig	24.05.2019					Xie Qingfang	
Als Betriebsgeheimnis anvertraut, alle Rechte vorbehalten	up to 6	0,1	Gepr./Check					24.05.2019	Guo Daxia
	over 6 up to 30	0,2	Benennung/ Designation					LP475085	
Proprietary data, company confidential, all rights reserved.	over 30 up to 100	0,3	Benennung/ Designation		LP475085				
	over 100	0,5	Origin:	support@lipolbattery.com		www.LiPolBattery.com			